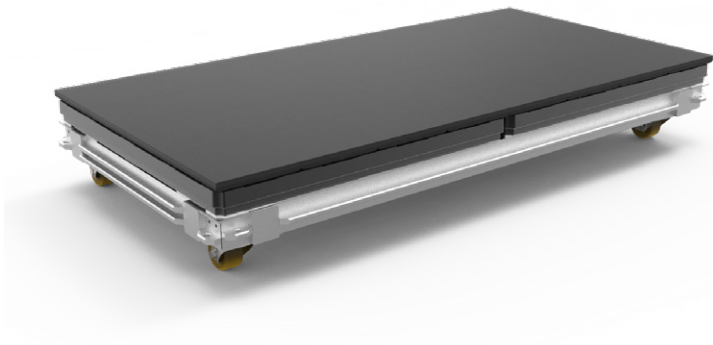


# Domino



Dominos have been developed by PRG Projects in order to be able to meet the short set-up and change-over times of an LED flooring for the Concert Touring and Festival segment. Not only do the Dominos dramatically reduce the set-up time for an LED floor on stage, they also are transported in especially fitted dollies, which contain 6 risers each.

## Specifications:

- One Domino is composed of 2 LED floor tiles, compatible tile dimensions 50x50cm or 60x60cm
- Weight: 15kg – total weight depending on chosen electronics
- Integrated magnets for fast and easy assembly of the LED floor with self-locating autoguide system
- Transport in customized dollies, which can contain up to 6 Dominos, total height 1.55m – allowing for a lower hold airfreight
- Ideal for concert touring and festivals allowing fast set up times and change-overs
- Integrated cable management
- Dimensions: 143.1 x 159.8cm (wxh)